

**Luiss**

Libera Università Internazionale  
degli Studi Sociali Guido Carli

# **Il PNRR come nuovo «metodo di governo» tra Italia e Unione europea**

Prof. Nicola Lupo

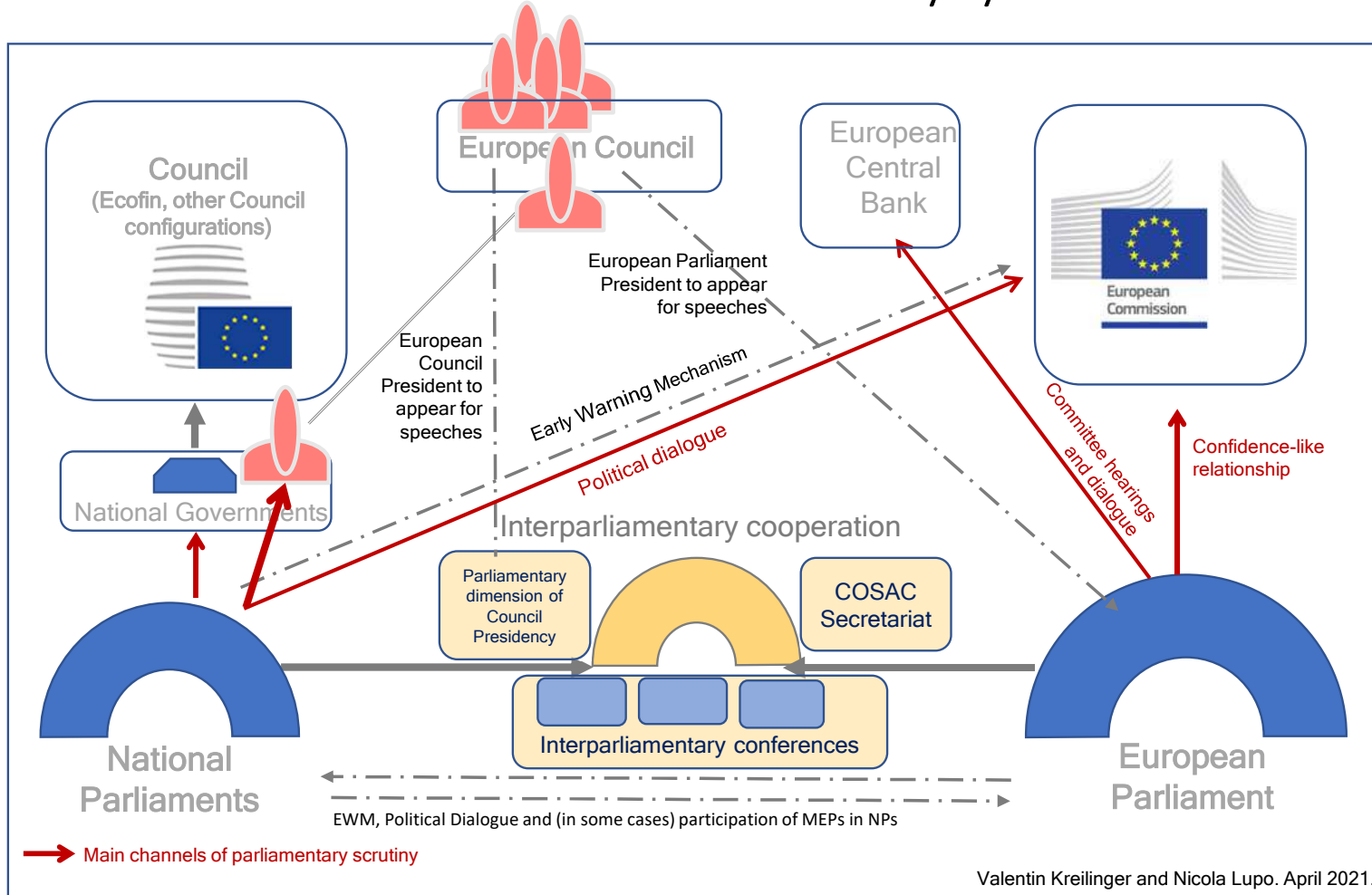
Osservatorio Legislativo Interregionale

13 aprile 2023

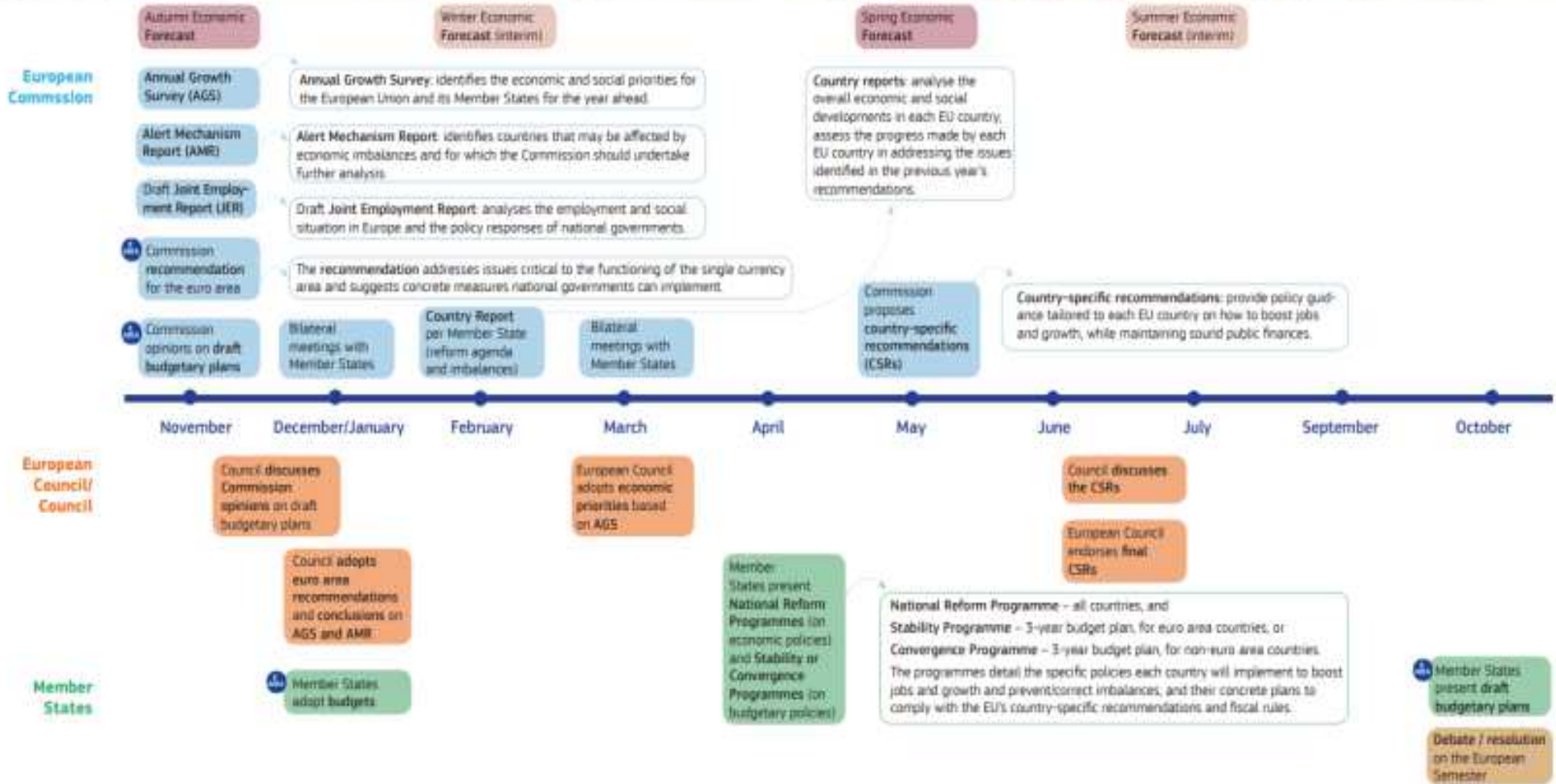
**LUISS**

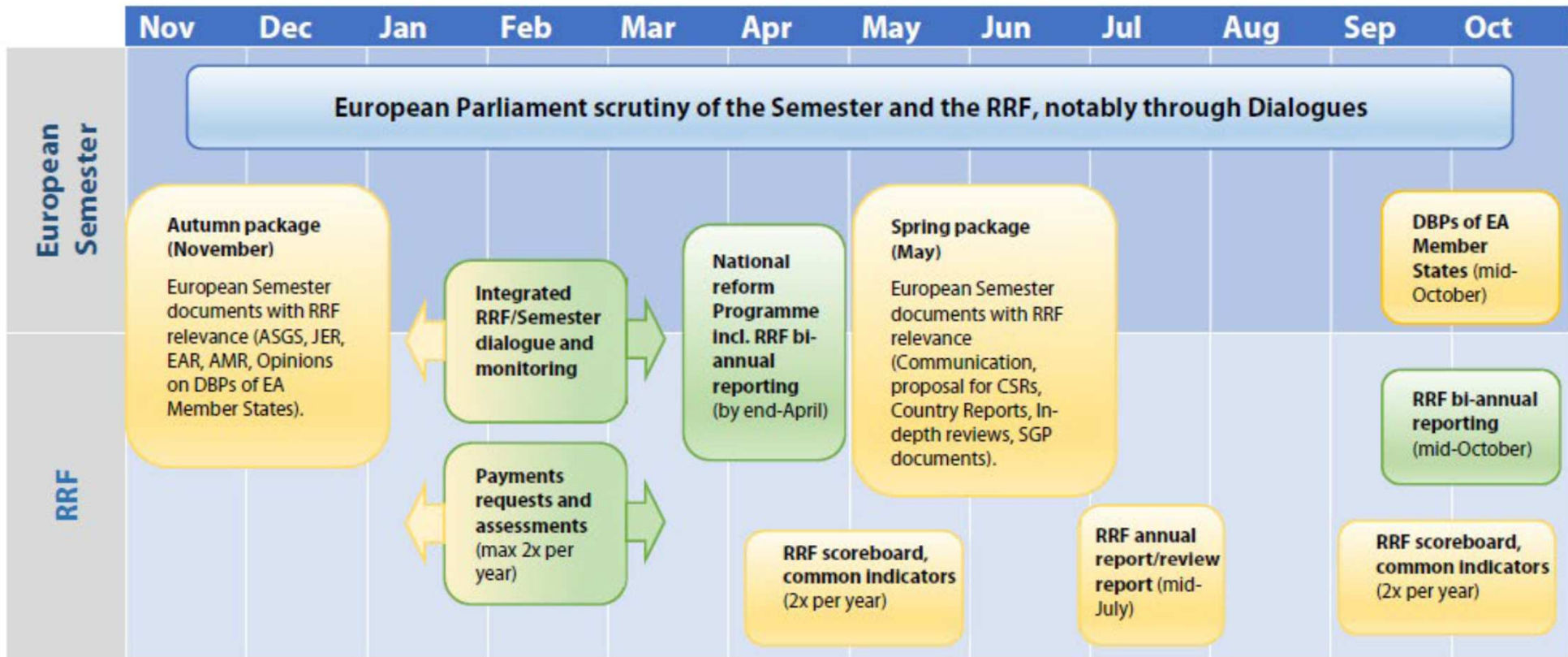


# The Euro-national Parliamentary System



# European Semester timeline



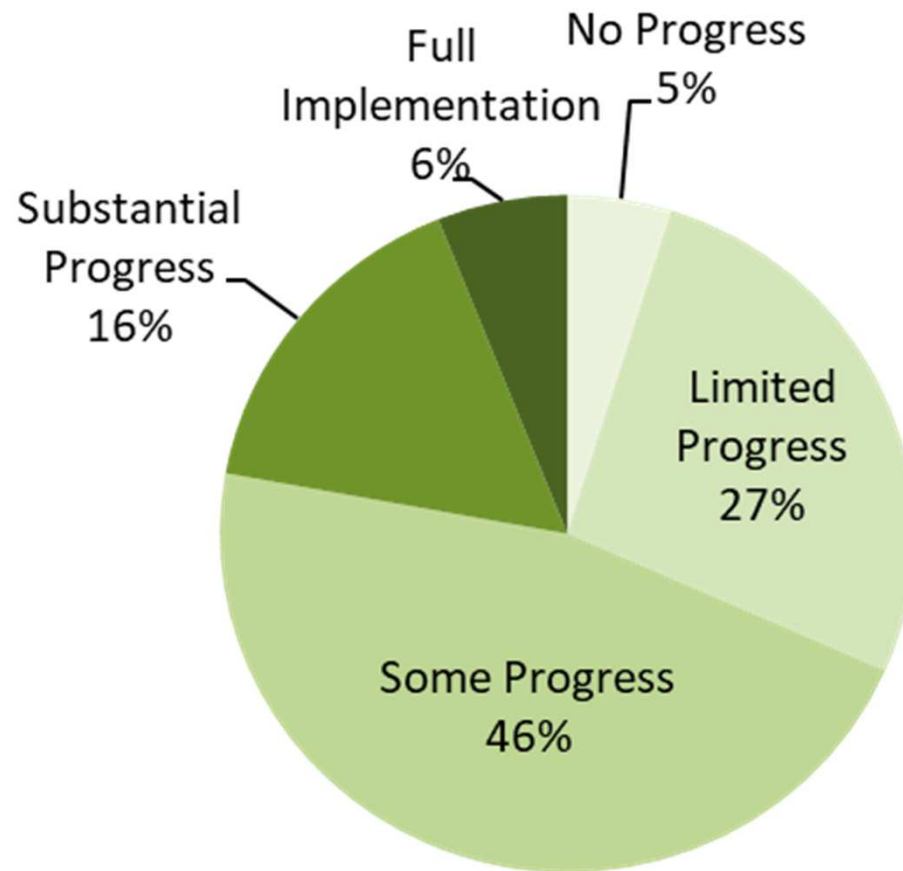


European Parliament

Commission

Member States

# Level of Implementation of CSR – May 2020



## Preparatory phase

Member States prepare RRP, undertaking public consultation, and expected to submit to COM by 30.04 (Measures started from 1 February 2020 are potentially eligible).  
COM informs EP and Council simultaneously of RRP submitted.  
Member States may submit an update of their RRP, once adopted, thus launching a new assessment process.

## Adoption phase

Within 2 months of submission, COM assesses RRP, and may require additional information from the Member States.  
COM informs EP and COM of its assessment simultaneously

In case of a **positive assessment** of the RRP, COM submits to Council its assessment and a draft Council implementing decision

In case of a **negative assessment** of the RRP, COM delivers a duly justified assessment to the Member State

Council adopts the implementing decision assessing the RRP within 4 weeks of submission (qualified majority voting)

## Implementation phase

### Funding:

Once Council adopts the implementing decisions on RRP:

- COM concludes individual commitments (and loan agreements, if applicable) with Member States
- Member States can request pre-financing
- Member States implement the RRP

Within 2 months of receiving requests for payments, COM preliminary assesses whether milestones and targets are met.

### In case of a preliminary **positive assessment**:

- COM submits assessment and requests EFC opinion on whether milestones and targets are reached (with possible involvement of the European Council)
- COM to submit to Comitology Committee a decision authorising disbursement (examination procedure; qualified majority voting)
- COM to submit its preliminary findings concerning satisfactory fulfillment of targets and milestones to Parliament

COM **negative assessment** shall lead to suspending payments  
In case of a **negative assessment**, COM may suspend payments

If **no or limited progress** in implementing the RRP within 18 months of the adoption of the Council implementing decisions, COM shall terminate the individual commitment and loan agreement (if applicable)

### Reporting:

- COM to set up the recovery and resilience scoreboard (by December 2021)
- Member States to report on progress every six months as part of the European Semester
- COM to provide an annual report on implementation of the RRF and to report (ex post) on expenditure financed by the RRF

## Review phase

Reforms and investments need to be completed by August 2026, payments by 31.12.2026.  
Independent ex post evaluation by 20.02.2024 and by 31.12.2028

Information that COM transmits to Council or its preparatory bodies to be made available simultaneously to EP Recovery and Resilience Dialogues with Commission in EP to take place every two months  
EP able to issue resolutions and COM to take into account

# Consiglio dei Ministri

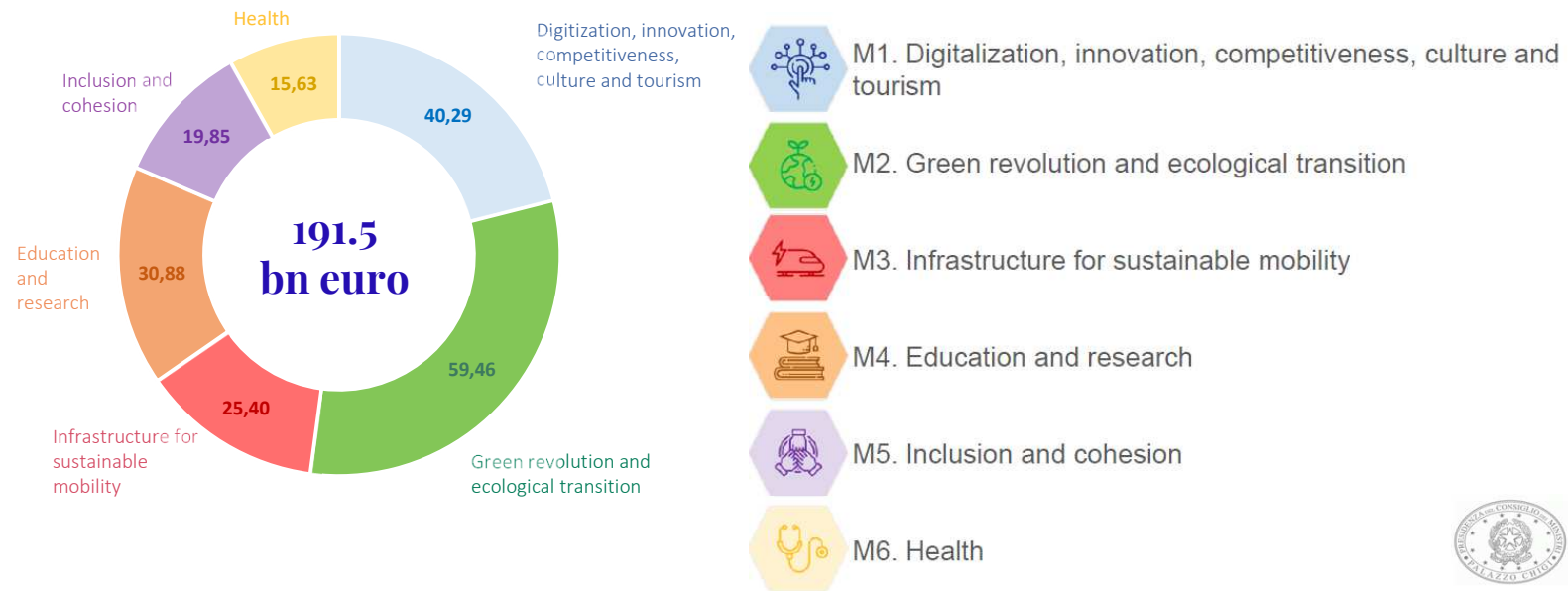


# Consiglio dell'UE



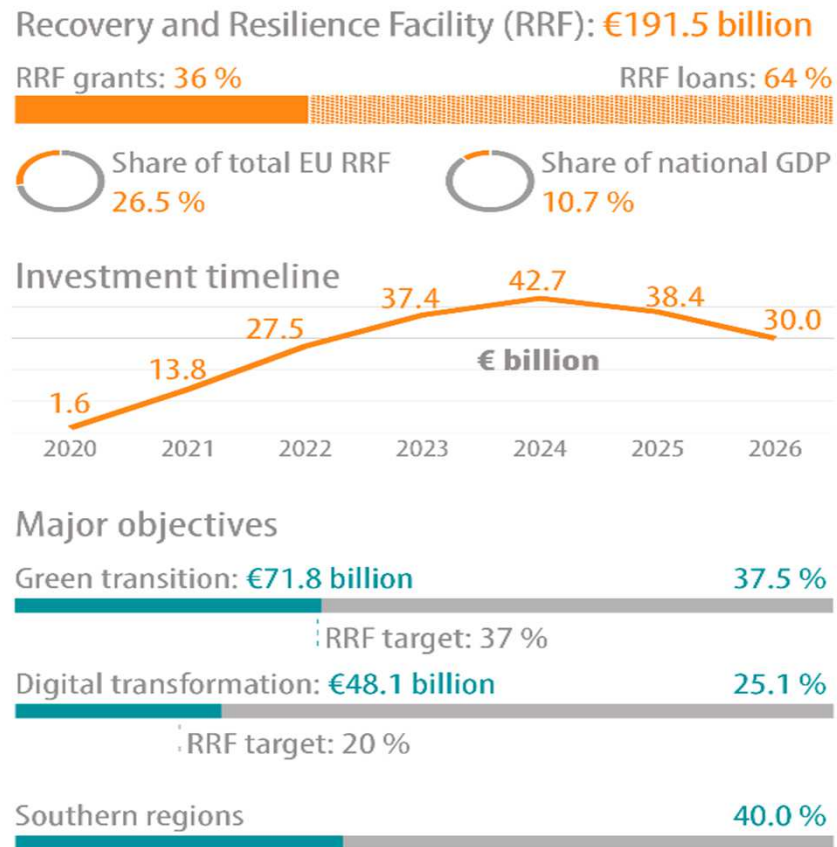
# Resources for Italy and policy areas

**191.5 billion euro: 68.9 grants and 122.6 loans**

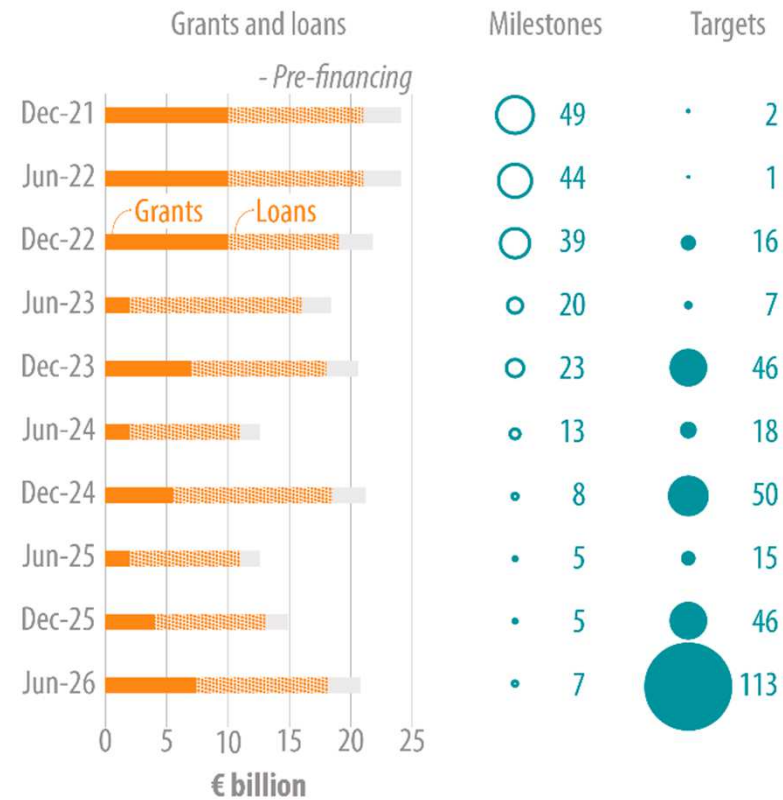




# €191.5 billion: 26.5% of the entire RRF



# The more we progress, the more the investments and targets



Integration through Funding?

## Link utili (1-UE)

- [https://ec.europa.eu/economy\\_finance/recovery-and-resilience-scoreboard/milestones\\_and\\_targets.html?lang=en](https://ec.europa.eu/economy_finance/recovery-and-resilience-scoreboard/milestones_and_targets.html?lang=en)
- [https://ec.europa.eu/economy\\_finance/recovery-and-resilience-scoreboard/disbursements.html?lang=en](https://ec.europa.eu/economy_finance/recovery-and-resilience-scoreboard/disbursements.html?lang=en)
- <https://www.europarl.europa.eu/thinktank/infographics/RRF/?lang=en#data-map>
- [https://www.europarl.europa.eu/RegData/etudes/ATAG/2015/542650/IPOL\\_ATAG\(2015\)542650\\_EN.pdf](https://www.europarl.europa.eu/RegData/etudes/ATAG/2015/542650/IPOL_ATAG(2015)542650_EN.pdf)
- [https://www.europarl.europa.eu/RegData/etudes/IDAN/2021/689471/IPOL\\_IDA\(2021\)689471\\_EN.pdf](https://www.europarl.europa.eu/RegData/etudes/IDAN/2021/689471/IPOL_IDA(2021)689471_EN.pdf)
- <https://www.consilium.europa.eu/en/press/press-releases/2022/12/12/nextgenerationeu-member-states-approve-national-plan-of-hungary/>
- <https://www.consilium.europa.eu/en/press/press-releases/2022/12/14/eu-recovery-plan-provisional-agreement-reached-on-repowerEU/>

## Link utili (2-Italia)

- <https://www.italiadomani.gov.it/content/sogei-ng/it/it/home.html>
- [https://commission.europa.eu/system/files/2021-12/countersigned - italy - rrf - oa 1.pdf](https://commission.europa.eu/system/files/2021-12/countersigned_-_italy_-_rrf_-_oa_1.pdf)
- [https://commission.europa.eu/system/files/2022-02/c\\_2022\\_1343\\_1\\_en\\_annexe\\_acte\\_autonome\\_nlw\\_part1\\_v1.pdf](https://commission.europa.eu/system/files/2022-02/c_2022_1343_1_en_annexe_acte_autonome_nlw_part1_v1.pdf)
- [https://commission.europa.eu/system/files/2022-09/c\\_2022\\_6989\\_1\\_annexe\\_en.pdf](https://commission.europa.eu/system/files/2022-09/c_2022_6989_1_annexe_en.pdf)
- [https://economy-finance.ec.europa.eu/system/files/2022-12/c\\_2022\\_9622\\_1\\_en.pdf](https://economy-finance.ec.europa.eu/system/files/2022-12/c_2022_9622_1_en.pdf)
- [https://commission.europa.eu/business-economy-euro/economic-recovery/recovery-and-resilience-facility/italys-recovery-and-resilience-plan\\_en#assessment-of-the-recovery-and-resilience-plan](https://commission.europa.eu/business-economy-euro/economic-recovery/recovery-and-resilience-facility/italys-recovery-and-resilience-plan_en#assessment-of-the-recovery-and-resilience-plan)
- <https://www.italiadomani.gov.it/content/sogei-ng/it/it/strumenti/andamento-sull-attuazione-del-piano.html?orderby=%40jcr%3Acontent%2FyearAndSemesterLabel&sort=desc>